

The Statbus system



Agenda

History of Statbus. Background and clarifications

Units in Statbus

Characteristics of the units

Configuration, Data quality

Users- and user maintenance



History of Statbus

- 2008-2015: Project in Kyrgyzstan creating an *administrative* business register.
 - Project failed for political reasons
 - Leftover funds to be used for developing a *statistical* business register
- 2016: Requirement specification written with the help of NSOs in Kyrgyzstan and Uganda
- 2017 – end of 2021: development of system
- 2022: Fixing leftovers



Administrative vs statistical business registers

- Administrative register – for governance
 - Register new businesses
 - Tax purposes
 - ..
- Statistical register
 - For drawing samples to surveys
 - Use as key for connecting other sources
 - To create statistics
 - ...
- Statistical register = adm. Register with some units and a few indicators added



International standards/guidelines for SBRs

- [United Nations Guidelines on Statistical Business Registers](#)
(still in draft version)
- [UNECE's Guidelines on Statistical Business Registers](#) (2015)
- [AfDB's Guidelines for Building Statistical Business Registers in Africa](#) (2014)



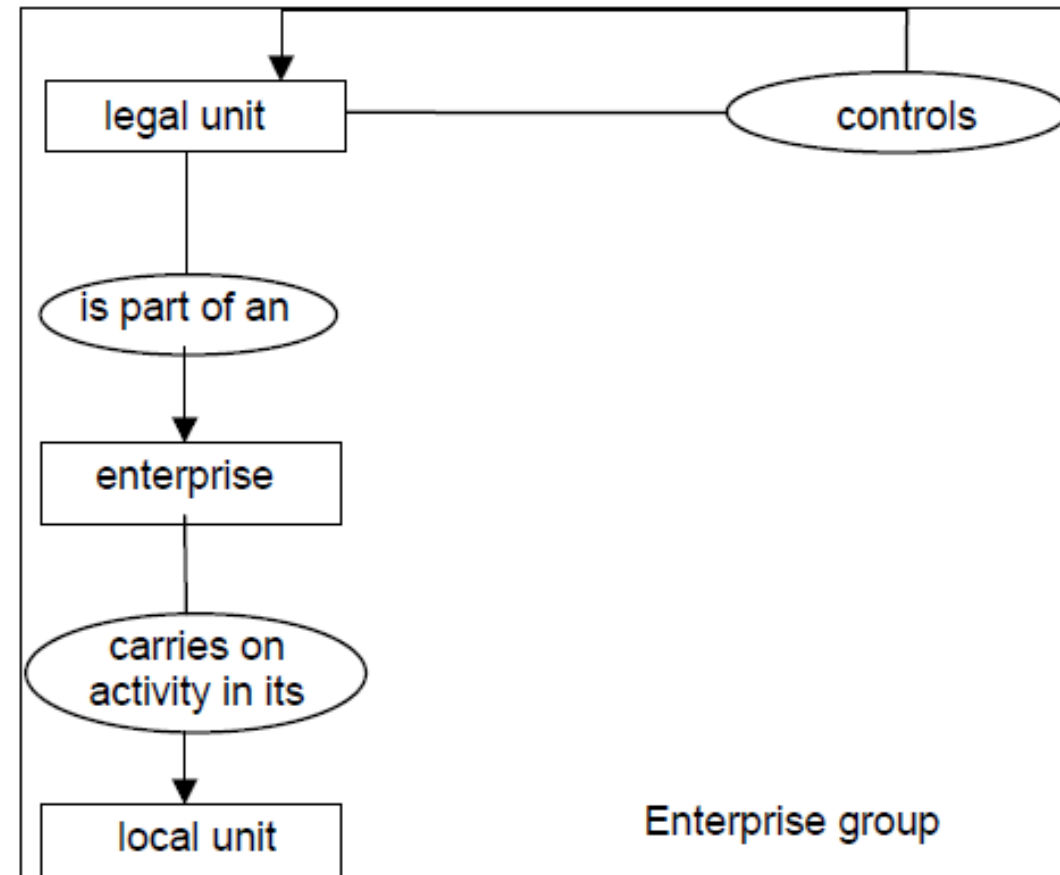
Requirements for an SBR

- Quality
 - Full coverage
 - High quality
 - Documentation
- Should contain the units as defined in the UNSD's recommendations
- Should contain stratification variables necessary to define relevant statistical populations
- Should also
 - Contain information on enterprise groups and globalisation
 - Be integrated with administrative register

Units in Statbus

Main units in an SBR

- Legal units
 - = The units registered in administrative sources
 - Controls itself
 - Is equal to an enterprise or is part of an enterprise (mostly there is a 1-1 correspondence between enterprise and legal unit)
- Local units: Where the activities are carried out
- Enterprise groups




“Derived” units

- KAU – Kind-of-Activity Unit: an enterprise or part of an enterprise that engages in only one kind of productive activity or in which the principal productive activity accounts for most of the value added
- LKAU – Local Kind-of-Activity Unit: The part of a KAU which corresponds to a local unit. (= “establishment”)



KAUs and LKAUs in Statbus

- Not explicitly defined
- Retrieved by looking at the activity at enterprise/local unit levels

Statistical Business Register | Statistical units ▾ | Sample frames ▾ | Data sources ▾ | Administrative tools ▾ | Reports |  ▾ | admin ▾

[its](#) > [View](#)

Hello World International

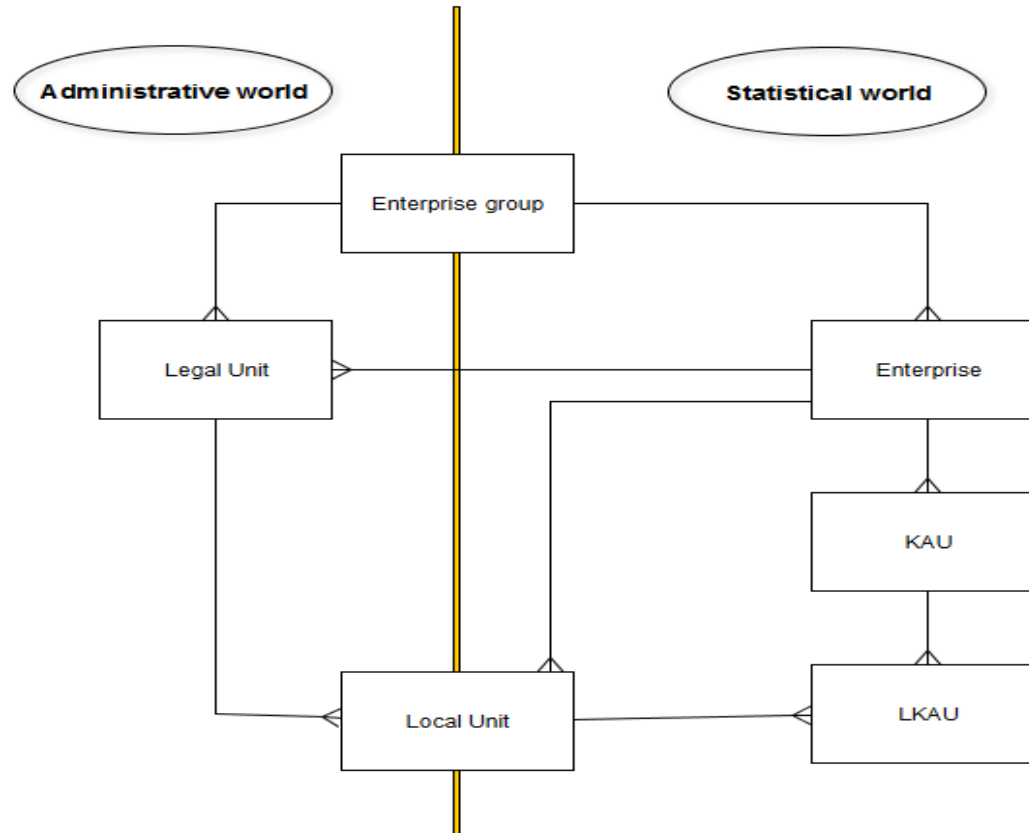
Statistical id Tax registration id Last activity by turnover Number employee year

[Main](#) [Links](#) [Organization Links](#) **[Activity](#)** [Contact information](#) [History](#) [Print](#)

Code	Activity	Activity type	Employees number	Turnover	Year
56.101	Operation of restaurants and cafes	Primary actual	5	200000	2017
68.209	Other letting of real estate	Secondary	3	1300000	2017

[← Back](#)

Map of units



Characteristics of the units

ID fields

- Computer generated ID – used internally in the database
- StatID – The ID used at the NSO
- Tax ID – ID of the tax authorities (to facilitate linking with tax data)
- External ID: Consists of 3 parts
 - External ID type: name of source (e.g. “customs” or “license office”)
 - External ID date
 - External ID: The actual ID given by the external ID type
- (RefNo: Link to paper questionnaire)



ID fields – food for thoughts

- Are 4 ID fields enough?
- What if there is a national ID only?
- Do we need refNo?



Biographic variables

- Name, short name
- Address fields
 - Address as registered
 - Actual address
 - Postal address
- Telephone, web address, email



Stratification variables

- Activities
 - Unlimited number of activities for a unit
 - Turnover and number of employees can be given at activity level
 - Activities also have info on year of commencement of activity
- Sector code
- Legal form
- Region hierarchy



Economic variables

- Number of employees
- Number of people employed
- Turnover

Status variable

- Whether unit is active, not yet active, dormant, liquidated, in liquidation phase stc



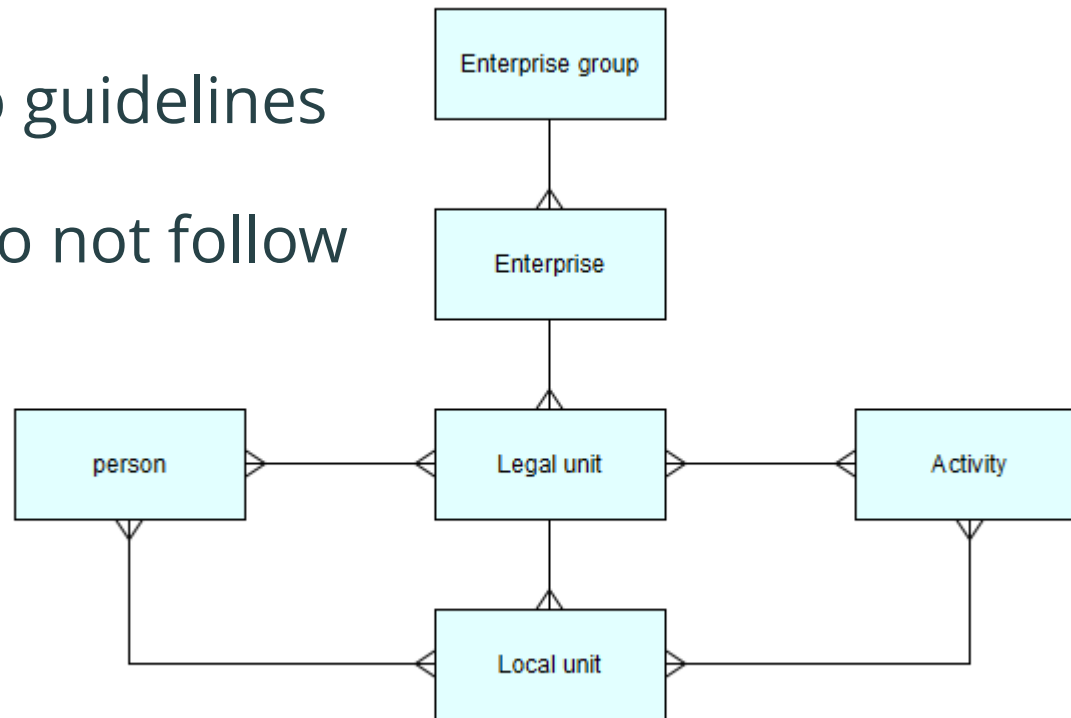
Variables – food for thoughts

- Three addresses? Is this necessary?
- Do we need more contact info fields?
- More economic variables?
 - Value added?
 - Employees by gender?
 -?



Linking variables

- Links between units according to guidelines
- Links for units in public sector (do not follow the “standard)
- (arrows ending in “crows feet” = many-relation)



Date and year variables

- Registration in Statbus (automatic)
- Registration at NSO
 - Might be older than Statbus
- Registration at Tax- and “external ID” authorities
- Registration date of unit
- Date of change of status
- Date and year of turnover validity
- Date and year of number of employees
- Suspension-, reorganisation and liquidation dates
- Date of links between units



Configuration

The appsettings file – mandatory fields

- Setting what variables are mandatory (“true”) or not (“false”)
- Some variables are grouped and have separate areas (example: “StatUnit” and “Addresses”)
- Notice details about address:
 - It is mandatory for a unit to have an address
 - The only address information (in the addresses area) that is mandatory is the “GeographicalCodes”
 - Hence each unit MUST have a geographical code, while no other address info is mandatory

```
appsettings.Production.json
47     },
48     "DbMandatoryFields": {
49       "StatUnit": {
50         "StatId": true,
51         "StatIdDate": true,
52         "ExternalId": false,
53         "ExternalIdType": false,
54         "ExternalIdDate": false,
55         "Name": true,
56         "ShortName": false,
57         "Address": true,
58         "TelephoneNo": false,
59         "Activities": false,
60         "RegistrationDate": false,
61         "RegistrationReasonId": false,
62         "ActualAddress": false,
63         "Persons": false,
64         "Employees": false,
65         "NumOfPeopleEmp": false,
66         "EmployeesYear": false,
67         "EmployeesDate": false,
68         "TaxRegId": false,
69         "TaxRegDate": false,
70         "Turnover": false,
71         "TurnoverYear": false,
72         "TurnoverDate": false,
73         "StatusDate": false,
74         "FreeEconZone": false,
75         "Classified": false,
76         "SizeId": false,
77         "DataSourceClassificationId": false,
78         "UnitStatusId": true
79       },
80     "Addresses": {
81       "AddressPart1": false,
82       "AddressPart2": false,
83       "AddressPart3": false,
84       "GeographicalCodes": true,
85       "Latitude": false,
86       "Longitude": false
87     },
88   },
89 }
```

The appsettings file – mandatory fields

- General settings for Units
- Settings for different kinds of units
- Additional settings for
 - Persons
 - Addresses
 - activities



The appsettings file settings for connections between units

- CheckRelatedActivities – if true: all units *must* have at least one activity
- checkRelatedPerson and checkAddress: similar
- Orphan: sets whether
 - A local unit can exist without a “parent” legal Unit
 - A legal unit can exist without a “parent” enterprise
 - Whether a legal unit can exist without having any local units
 - ...

```
appsettings.Production.json x
56 },
57 "StatUnitAnalysisRules": {
58   "Connections": {
59     "CheckRelatedActivities": true,
60     "CheckRelatedPersons": false,
61     "CheckAddress": false
62   },
63   "Orphan": {
64     "CheckOrphanLocalUnits": false,
65     "CheckOrphanLegalUnits": false,
66     "CheckLegalUnitRelatedLocalUnits": false,
67     "CheckEnterpriseRelatedLegalUnits": false,
68     "CheckEnterpriseGroupRelatedEnterprises": false
69   },

```



Appsettings file – custom Analysis Checks

- Additional quality checks can be entered into the database
- If customAnalysisCheck is true, these checks are applied
- Example: Check whether size matches number of employees:

```
"CheckTelephoneNo": false,  
"CheckAddressId": false,  
"CheckEmailAddress": false,  
"MinimalIdenticalFieldsCount": 2  
},  
"CustomAnalysisChecks": true  
},  
"ValidationSettings": {  
  "ValidateStatIdChecksum": false,  
  "StatIdUnique": false  
}
```

```
GO  
INSERT INTO [dbo].[CustomAnalysisChecks]  
  ([Name]  
  ,[Query]  
  ,[TargetUnitTypes])  
VALUES  
  ('Size vs number of people employed'  
  ,'select * from statunits where size <> 3 and employees >= 200'  
  ,'LegalUnit')
```



Configuration – languages

- Web site: languages must be handled prior to build- and installation of system
- Classifications: also up to 3 languages. To be uploaded as classifications are uploaded



Users and user maintenance

