

National accounts

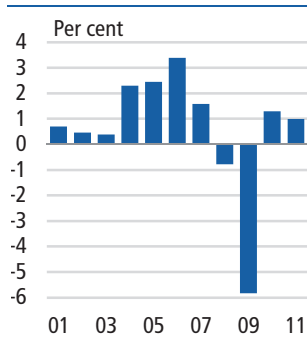
1

Danish economy 2000 to 2011

Economic growth in 2011

GDP increased by 1.0 per cent in 2011. High growth rates in 2004-2006 and more subdued growth in 2007 was followed by negative growth in 2008 and a historic economic downturn in 2009, before Danish Economy partially recovered in 2010 and 2011.

Figure 1
Real growth in GDP



www.statbank.dk/nat02

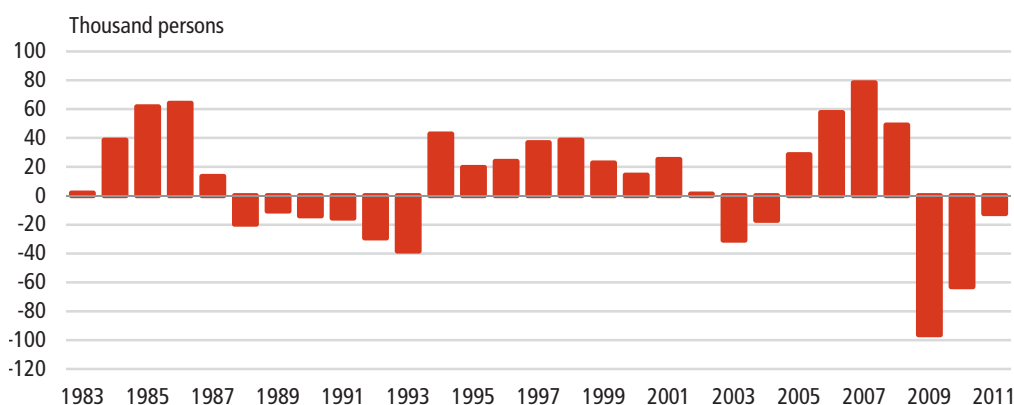
In comparison the real growth in GDP averaged 2.4 per cent from 2003 to 2007 which is the latest period with an economic upturn, while the growth rate from 2007 to 2009 was -3.3 per cent annually on average. In 2010 and 2011 the average growth rate was 1.1 pct.

Continued decrease in employment

The decrease in employment continued in 2011 with a drop of 12,000 persons (0.4 per cent). In 2011, the average number of persons employed was approximately 2,780,000. Of these, 39,000 persons were on leave.

Often, changes in employment are lagged compared to the economic growth. This was seen clearly in 2001, 2004 and 2008 when the economic conditions changed.

Figure 2
Annual growth in employment



Note: Including persons on leave.

www.statbank.dk/nat18

The share of the workforce employed in goods-producing industries (agriculture, manufacturing, energy, and construction) has been continuously declining for several years. In 2000, 25.6 per cent was employed in the goods-producing industries, while in 2011 the proportion was 20.7 per cent. During the same period, employment increased, in particular in the private service industries (from 39.9 per cent in 2000 to 43.3 per cent in 2011). The percentage of persons employed in public and personal services was 34.5 per cent in 2000 and 35.9 per cent in 2011.

2

Domestic demand and foreign trade**Increased demand from export**

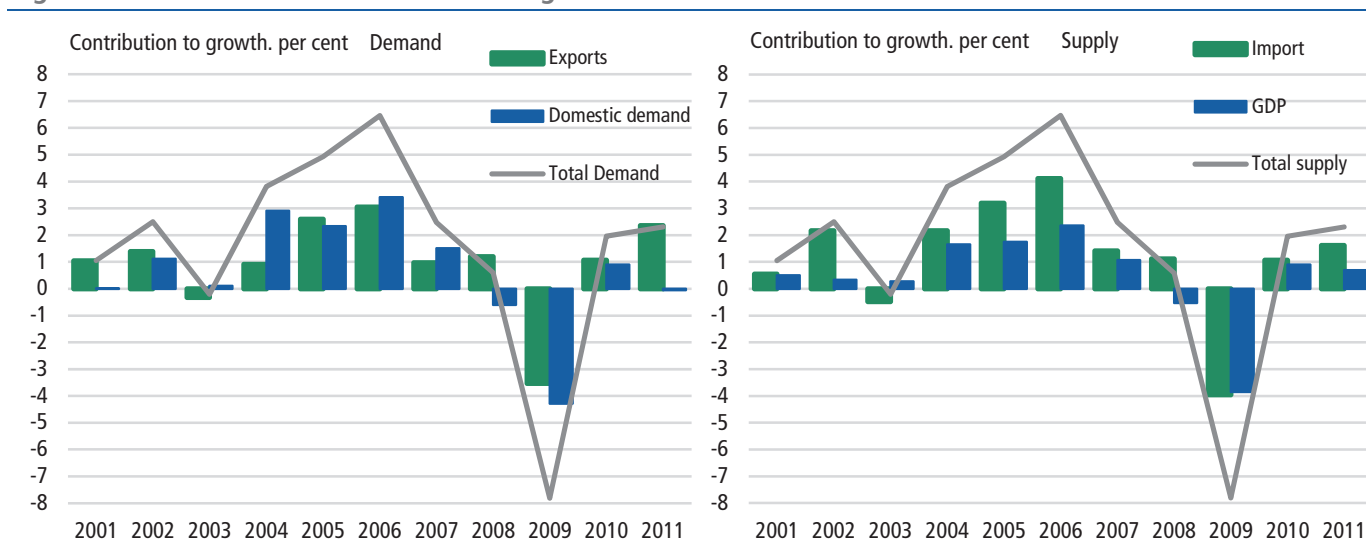
Total demand increased by 2.3 per cent in 2011. Hence, it continued the positive trend from 2010. The development was caused by a marked increase in export demand and a small decline in domestic demand. The increased demand was met with increases in both GDP and imports. Imports contributed the most to the growth in total supply.

Total demand and total supply are by definition equal and change by the same rate. An increase in total demand is caused by an increase in exports or domestic demand. An increase in total supply originates from an increase in imports or domestic value added measured by GDP.

Periods with strong growth in demand often cause a similar growth in imports because, in the short run, GDP cannot expand sufficiently to meet the demand. This tendency can be seen in the period 2004-2006, where the contributions from imports to the growth in supply were large and increasing.

In 2008, where the decline in GDP began, there was a marginal increase in total demand, which consisted of an increase in exports and a decline in domestic demand. On the supply side the picture was the same – imports increased and GDP decreased. Large decreases in demand from both exports and domestic markets in 2009 contributed to a strong decline in total demand. This led to substantial decreases in supply from both imports and GDP.

Figure 3 Contribution to real annual growth in GDP

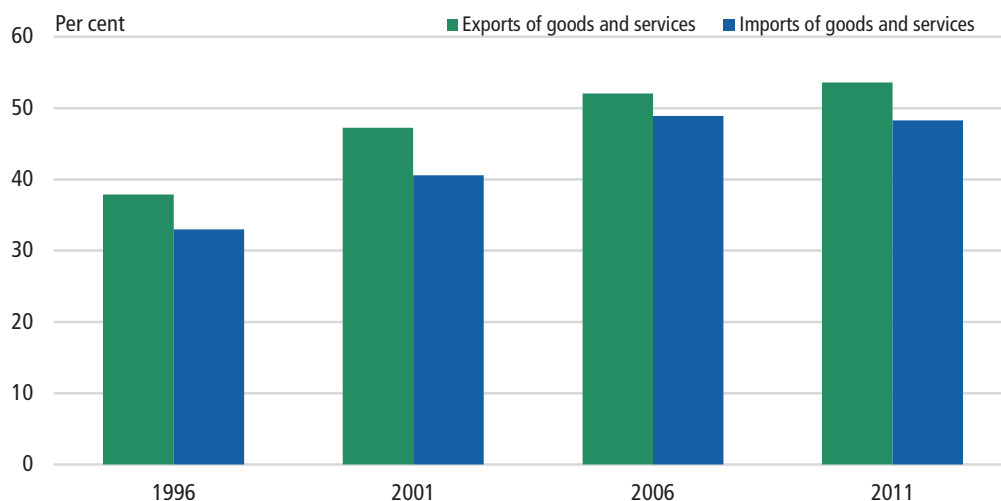
**Increased foreign trade in 2011**

After a considerable decline in 2009, the foreign trade partially recovered in 2010 with growth in exports as well as imports. This recovery continued and amplified in 2011 and the total volume of exports is now close to the 2008 level.

Measured in current prices, Denmark's foreign trade has, except from the decline in 2009, seen a relatively large increase the last ten years. Particularly, trade in services has increased steeply. The import of services almost doubled from 2000 to

2008, and the export of services increased almost at the same rate. Among other things, the increase in trade in services is due to a higher price growth of services compared to goods. Mergers and acquisitions in the sea transport industries are other factors that have had an impact on trade in services.

Figure 4 Imports and exports as percentage of GDP, current prices

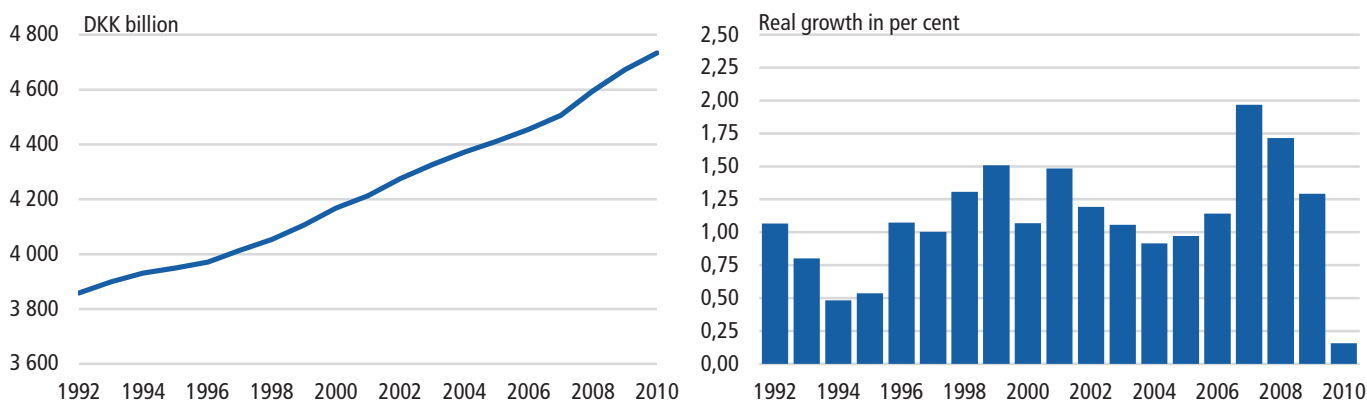


www.statbank.dk/nat01

The capital stock increased slightly in 2010

The share of the national wealth that is held in the form of fixed assets (net capital stock) was on the whole unchanged in 2010. In earlier years, the net capital stock has been continuously increasing and grew by 12.5 per cent from 2000 to 2010. The change in the net capital stock at current prices between two dates of compilation reflects net investment (gross fixed capital formation less consumption of fixed capital) and nominal revaluations during the period.

Figure 5 Net capital stock



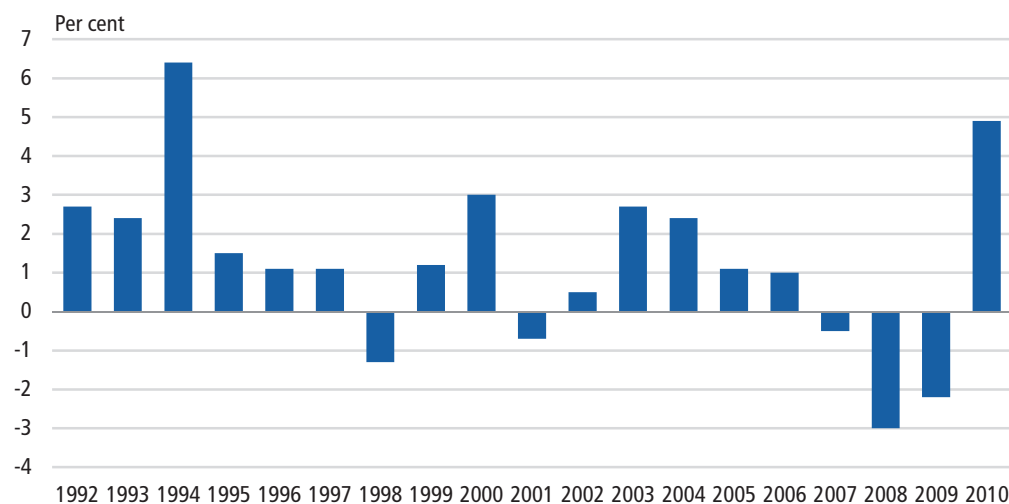
www.statbank.dk/nat08

Large increase in productivity

Based on the figures from the Danish working time account, it is possible to calculate productivity per hour as the market gross value added per working hour.

The productivity increased by 5.8 per cent in 2010 following a 1,2 per cent increase in 2009 after two years with decreasing productivity. The productivity increased by an annual average of 0.9 per cent from 2000 to 2010.

Figure 6 Gross value added per hour at 2000 prices (chained). Annual growth rate



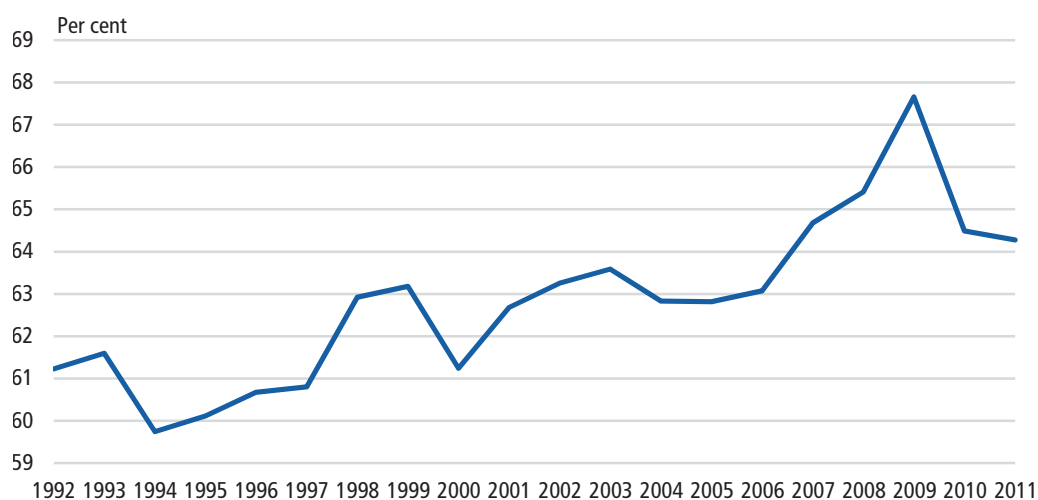
www.statbank.dk/nat23

Decreasing wage share in 2011

Total income from production comprises compensation of employees and enterprises' profits (gross operating surplus and mixed income). In 2010 the share of wages and salaries of total income decreased significantly and almost dropped to the level in 2007. It decreased further in 2011.

From 1994 to 2006 the wage share increased slightly with a significant decline in 2000 followed by an increase from 2001 to 2003. In 2004 there was a moderate decline, and the next two years it was stable. From 2006 the wage share increased significantly and reached a peak level of 67.7 per cent in 2009 before decreasing to 64.5 per cent in 2010 and 64.3 per cent in 2011.

The figure below shows changes in compensation of employees as a proportion of GDP at factor prices.

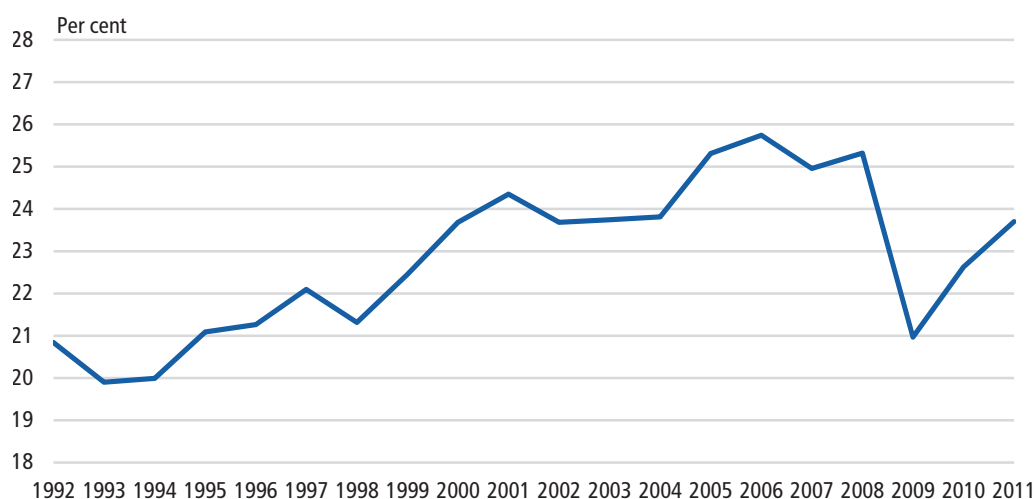
Figure 7 The wage share

www.statbank.dk/nat01

3

Savings and balance of payments**Surplus on the balance of payments**

The savings ratio of the Danish economy (i.e. savings as a percentage of gross national disposable income) increased steadily from 21.3 per cent in 1998 to 24.3 per cent in 2001. After 2001 the savings ratio has remained relatively constant up to and including 2008, reaching its highest level in 2006 where it was 25.7 per cent. In 2009 the savings ratio decreased to 21.0 per cent and has been growing to 22.6 per cent in 2010 and 23.7 per cent in 2011.

Figure 8 Savings ratio, current prices

www.statbank.dk/nat01

Since 1999, Denmark's balance of payments has shown a surplus on the current account. Including capital transfers, there has also been positive net lending. There was a fall in net lending in both 2006 and 2007 but it has increased sharply since and is estimated at DKK 120 billion for 2011.

4

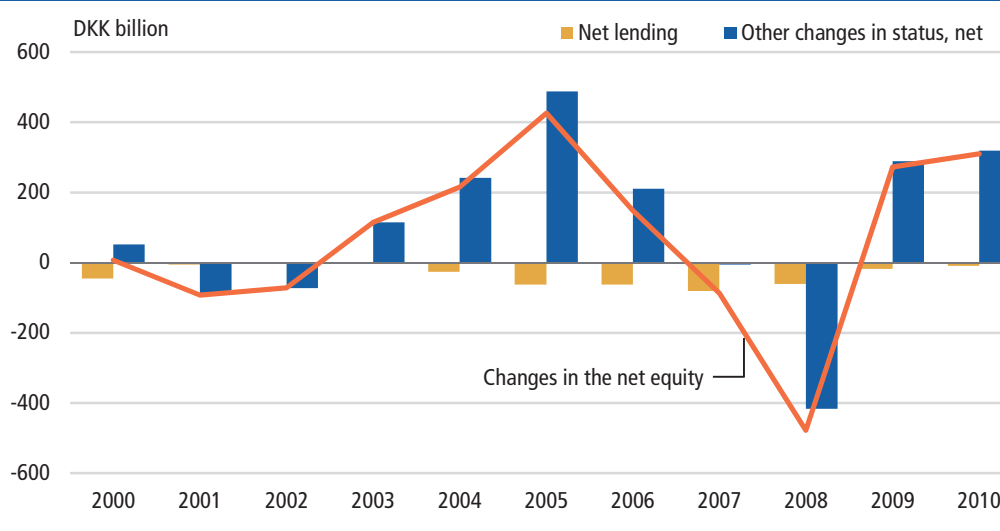
Financial claims

Rise in financial net equity of households

In 2010 the financial net equity of households continued rising after a decline in both 2007 and 2008. The explanation can be found in the evolution of *other changes in status, net* where the development in the financial markets in 2009 and 2010 gave positive revaluations. In 2007 and 2008 net equity was affected by large negative revaluations. Especially share price fluctuations have affected the households' net equity both directly and indirectly through their pension scheme savings in life insurance companies and pensions funds.

In addition to the household sector, the national accounts include financial accounts for three other main sectors: corporate sector (non-financial and financial corporations), general government sector, and the rest of the world. The financial claims consist of a number of financial assets and liabilities comprising, e.g., shares, bonds and loans. The difference between the total financial assets and the total financial liabilities constitute the financial net worth.

Figure 9 Development in the net equity of households



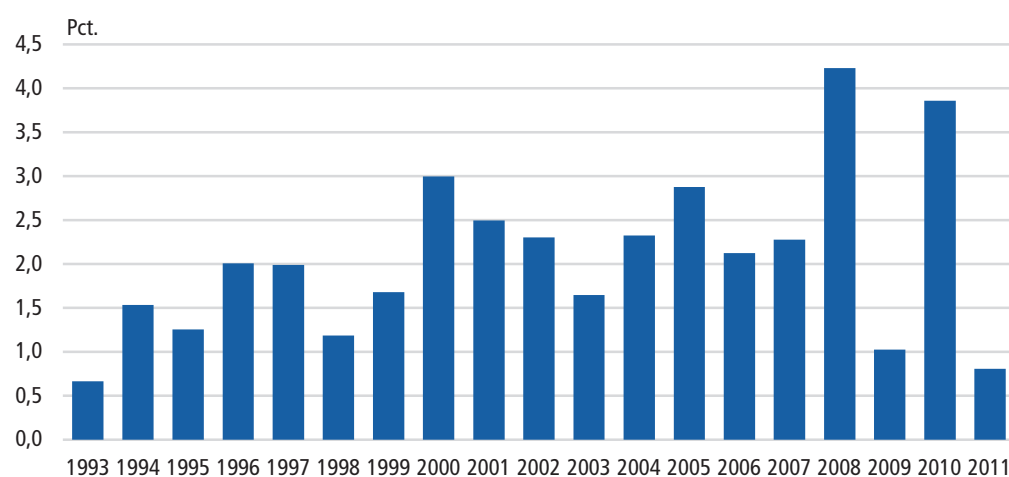
5

Inflation

Low inflation in 2011

In 2011 the inflation (measured as the annual increase in the GDP deflator) in Denmark was 0.8 per cent. In recent years the inflation has fluctuated with high inflation rates in 2008 and 2010 and low inflation rates in 2009 and 2011.

Between 1989 and 2007 the inflation was both low and stable. The average increase in annual prices in the period was 2.0 per cent, and only in 2000 did the inflation reach 3 per cent.

Figure 10 Inflation measured as annual change in the GDP deflator

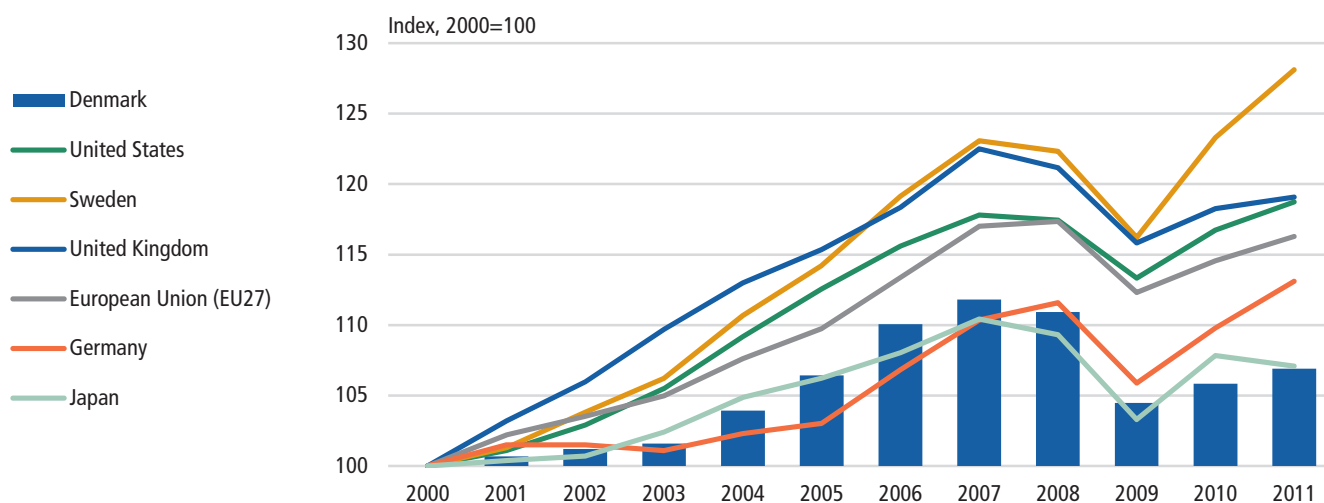
www.statbank.dk/nat01 and nat02

6

International comparison**Economic recovery in 2010**

In 2009 the economic decline became global with a massive economic decline in many of the countries with significant importance for the economic development in Denmark. In 2010 the countries with the greatest significance for the Danish economic development experienced partially economic recovery with increases in GDP.

In 2011 Sweden and Germany experienced significant economic growth with growth rates of GDP of 3.9 and 3.0 per cent, respectively. The GDP growth in Great Britain, USA and the EU was moderate in comparison while Japan experienced an economic decline of 0.7 per cent. In 2011, as in 2010, the economic growth in Denmark was slightly subdued compared to the growth in the EU.

Figure 11**GDP in selected countries, constant prices**

Source: Eurostat, New Cronos.

Table 349 Supply and demand

	Gross domestic product at market prices	Imports of goods and services	Resources, total	Private consumption expenditure	Government consumption expenditure	Gross capital formation	Exports of goods and services
DKK mio. at current prices							
2004	1 466 180	593 572	2 059 752	707 214	389 028	298 508	665 004
2005	1 545 257	681 203	2 226 460	745 139	402 509	321 807	757 006
2006	1 631 659	797 745	2 429 404	786 583	422 604	370 615	849 602
2007	1 695 264	846 518	2 541 782	820 408	439 979	396 153	885 241
2008	1 753 152	903 963	2 657 115	840 017	465 404	392 109	959 585
2009*	1 667 839	731 135	2 398 974	814 897	496 957	293 385	793 734
2010*	1 754 648	790 654	2 545 302	850 920	510 184	301 156	883 042
2011*	1 786 477	862 516	2 648 993	867 916	511 299	312 574	957 203
DKK mio. in 2005 prices ¹ , chain figures							
2004	1 508 375	613 413	2 121 948	717 787	397 438	305 256	700 787
2005	1 545 257	681 203	2 226 460	745 139	402 509	321 807	757 006
2006	1 597 714	772 600	2 370 314	771 596	413 635	360 213	824 872
2007	1 623 010	805 729	2 428 894	794 952	419 185	367 028	847 735
2008	1 610 288	832 649	2 443 223	792 482	427 189	348 136	876 018
2009*	1 516 348	735 744	2 252 446	758 882	438 059	268 271	790 431
2010*	1 535 994	761 391	2 296 664	773 166	439 273	272 637	815 929
2011*	1 551 315	801 009	2 349 579	769 234	434 796	280 166	871 233
Annual real growth in per cent							
2004	2.3	7.7	5.7	4.7	1.8	6.7	2.8
2005	2.4	11.1	8.1	3.8	1.3	5.4	8.0
2006	3.4	13.4	9.1	3.6	2.8	11.9	9.0
2007	1.6	4.3	4.6	3.0	1.3	1.9	2.8
2008	-0.8	3.3	4.5	-0.3	1.9	-5.1	3.3
2009*	-5.8	-11.6	-9.7	-4.2	2.5	-22.9	-9.8
2010*	1.3	3.5	6.1	1.9	0.3	1.6	3.2
2011*	1.0	5.2	4.1	-0.5	-1.0	2.8	6.8

¹ Chained values do not show additivity. The sum of the components will thus not be equal to the shown totals. The magnitude of the difference is not an indicator of the reliability of the results.

www.statbank.dk/nat01, nat02 and nat04

Table 350	Generation and disposition of income		
	2009*	2010*	2011*
	DKK mio. at current prices		
Compensation of employees	972 335	974 249	986 940
+Gross operating surplus and mixed income	464 851	536 564	548 591
Gross domestic income at factor cost, GDI	1 437 186	1 510 814	1 535 531
+Other taxes less subsidies on production	- 2 844	- 443	- 730
Gross value added	1 434 342	1 510 371	1 534 801
+Taxes on products	249 036	260 034	266 776
÷Subsidies on products	15 539	15 757	15 099
Gross domestic product at market prices, GDP	1 667 839	1 754 648	1 786 477
+Compensation of employees from the rest of the world	6 493	6 650	6 741
÷Compensation of employees to the rest of the world	17 966	16 234	16 708
+Subsidies from the rest of the world	8 853	7 399	7 427
÷Taxes on production and import to the rest of the world	2 995	3 275	3 282
+Property income from the rest of the world	127 824	143 209	177 420
÷Property income paid to the rest of the world	95 415	96 793	114 195
Gross national income, GNI	1 694 633	1 795 606	1 843 879
+Current taxes on income, wealth, etc. from the rest of the world	4 457	4 320	4 381
+Other current transfers, etc. from the rest of the world	11 284	10 682	11 552
÷Current taxes on income, wealth, etc. to the rest of the world	959	959	959
÷Other current transfers, etc. to the rest of the world	49 541	50 537	51 275
Gross national disposable income	1 659 874	1 759 111	1 807 577
÷Private final consumption expenditure	814 897	850 920	867 916
÷General government final consumption expenditure	496 957	510 184	511 299
Gross national saving	348 019	398 007	428 361
÷Corporations and households gross fixed capital formation ¹	259 500	263 497	274 340
÷General government gross fixed capital formation	33 885	37 661	38 234
Current external balance	54 634	96 851	115 787
+Capital transfers from the rest of the world	2 226	2 346	6 015
÷Capital transfers to the rest of the world	2 704	1 953	2 023
÷Acquisitions less disposals of non-financial non-produced assets	262	197	238
Net lending/net borrowing	54 417	97 441	120 017

¹ Incl. change in stock.

Table 351 Net value added, consumption and gross fixed capital formation

	Net value added		Total consumption ¹			Gross fixed capital formation per constant prices
	Constant prices	Annual increase at constant prices	Constant prices	Constant prices per inhabitant	Annual real growth per inhabitant	
	1980=100	per cent	1980=100		per cent	
1921-1929 average	24	4.1	23	35	2.8	11
1930-1939 average	31	2.5	28	40	1.4	17
1940-1946 average	31	0.2	27	34	0.6	14
1947-1950 average	39	4.4	36	44	0.6	26
1951-1957 average	44	1.7	40	46	1.0	33
1958-1965 average	57	4.6	53	58	4.1	56
1966-1973 average	79	3.7	76	79	3.6	95
1974-1975 average	88	-1.5	87	88	-0.9	101
1976-1979 average	95	3.4	97	98	3.8	111
1980-1981 average	100	-0.5	100	100	-1.4	94
1982-1986 average	110	3.5	107	107	3.1	119
1987-1993 average	121	0.8	114	113	-0.1	148
1994-2000 average	140	2.9	132	128	2.1	192
2001-2003 average	152	0.0	141	135	0.6	211
2005-2007 average	158	1.7	156	147	3.0	296
2008-2011* average	154	-1,3	158	147	-1,1	223

¹ Incl. Changes in stock and livestock.

www.statbank.dk/nat02

Table 352 Denmark and rest of the world (ROW)

	2009*	2010*	2011*
	DKK mio. in current prices		
Exports of goods	492 351	538 263	599 382
+Income from tourism from ROW	35 285	38 361	36 833
+Exports of other services	266 097	306 419	320 988
+Compensation of employees from ROW	6 493	6 650	6 741
+Subsidies from ROW	8 853	7 399	7 427
+Property income from ROW	127 824	143 209	177 420
+Current taxes on income, wealth, etc. from ROW	4 457	4 320	4 381
+Other current transfers, etc. from ROW	11 284	10 682	11 552
Current income from ROW	952 646	1 055 302	1 164 723
+Capital transfers, etc. from ROW	2 226	2 346	6 015
+Disposal of non-financial, non-producing assets	377	302	330
Total income from ROW	955 248	1 057 951	1 171 068
Imports of goods	461 848	502 673	562 446
+Expenditure on tourism etc. in ROW	54 509	58 821	57 698
+Imports of other services	214 778	229 159	242 371
+Compensation of employees to ROW	17 966	16 234	16 708
+Taxes on production and import	2 995	3 275	3 282
+Property income to ROW	95 415	96 793	114 195
+Current taxes on income, wealth, etc. to ROW	959	959	959
+Other current transfers, etc. to ROW	49 541	50 537	51 275
Current expenditure to ROW, total	898 012	958 452	1 048 936
+Capital transfers, etc. to ROW	2 704	1 953	2 023
+Acquisition of non-financial, non-producing assets	115	105	92
Total expenditure to ROW	900 831	960 510	1 051 051
External balance of goods	30 503	35 589	36 936
External balance of services	32 096	56 799	57 751
External balance of goods and services	62 599	92 388	94 687
Current external balance	54 634	96 851	115 787
Net lending	54 417	97 441	120 017

Note: Excluding Greenland and Faroe Islands.

www.statbank.dk/nat01

Table 353	General government	2009*	2010*	2011*
		DKK mio. in current prices		
Output		521 732	537 266	537 351
÷ Intermediate consumption		170 597	174 897	176 841
Gross value added, GVA		351 135	362 369	360 510
÷ Consumption of fixed capital		33 105	33 935	34 700
Net value added		318 030	328 434	325 810
Gross value added, GVA		351 135	362 369	360 510
÷ Other taxes less subsidies on production		-4 159	-5 196	-4 874
Gross domestic product at factor cost		355 294	367 565	365 384
÷ Compensation of employees (paid by res. employers)		322 188	333 630	330 684
Gross operating surplus		33 105	33 935	34 700
+ Taxes on production and income		279 815	292 783	301 594
÷ Subsidies		43 304	44 824	46 503
+ Property income, net from ROW		2 681	-27	2 198
Gross primary income		272 298	281 867	291 989
+ Current taxes on income, wealth, etc.		494 932	520 008	534 753
+ Social contributions		32 062	33 970	35 198
+ Social benefits other than transfers in kind		•	•	•
+ Other current transfers		13 204	15 487	16 355
Gross total income		812 496	851 332	878 295
+ Current taxes on income, wealth, etc.		•	•	•
+ Social contributions		•	•	•
+ Social benefits other than transfers in kind		283 643	303 691	311 643
+ Other current transfers		42 986	44 477	44 422
Gross total expenditure		326 629	348 168	356 064
Gross disposable income		485 867	503 164	522 231
÷ Social transfers in kind		353 815	365 304	366 081
Gross adjusted disposable income		132 053	137 860	156 150
Gross disposable income		485 867	503 164	522 231
÷ Final consumption expenditure		496 957	510 184	511 299
Gross saving		-11 090	-7 020	10 932
Adjusted gross disposable income		132 053	137 860	156 150
÷ Actual collective consumption		143 142	144 880	145 218
Gross saving		-11 090	-7 020	10 932
+ Capital transfers, net		-119	-3 247	-7 561
Changes in net worth due to saving and capital transfers		-11 208	-10 267	3 372
÷ Gross fixed capital formation		33 885	37 661	38 234
÷ Changes in inventories		0	0	0
÷ Acquisitions of non-financial non-produced assets, net.		762	-515	-121
Net lending		-45 855	-47 413	-34 742

www.statbank.dk/nat03

Table 354	Corporate sector		
	2009*	2010*	2011*
	DKK mio. in current prices		
Output	2 094 335	2 218 723	2 343 935
÷ Intermediate consumption	1 195 513	1 259 538	1 366 374
Gross value added, GVA	898 823	959 185	977 561
÷ Consumption of fixed capital	188 031	180 715	176 375
Net value added	710 791	778 470	801 185
Gross value added, GVA	898 823	959 185	977 561
÷ Other taxes less subsidies on production	1 576	3 498	3 170
Gross domestic product at factor cost,	897 247	955 687	974 391
÷ Compensation of employees (paid by resident producers)	597 447	587 674	602 336
Gross operating surplus and mixed income	299 800	368 013	372 055
+ Property income, net.	29 551	16 690	38 159
Gross primary income	329 351	384 703	410 214
+ Current taxes on income, wealth, etc.	•	•	•
+ Social contributions	140 768	136 485	0
+ Social benefits other than transfers in kind	•	•	•
+ Other current transfers	48 209	51 620	52 386
Gross total income	518 328	572 808	598 531
+ Current taxes on income, wealth, etc.	38 650	48 161	50 309
+ Social contributions	•	•	•
+ Social benefits other than transfers in kind	61 740	65 813	77 727
+ Other current transfers	52 325	57 305	58 558
Gross total expenditure	152 715	171 279	186 594
Gross disposable income	365 613	401 529	411 937
÷ Adjustment for the change in net equity of households in pension funds reserves	79 028	70 672	58 204
Gross saving	286 585	330 857	353 732
+ Capital transfers, net.	365	-618	9 139
Changes in net worth due to saving and capital transfers	286 949	330 238	362 871
÷ Gross fixed capital formation, etc.	190 324	180 003	185 271
÷ Changes in inventories	-20 241	-4 034	2 252
÷ Acquisitions of non-financial non-produced assets, net.	-643	60	-177
Net lending	117 509	154 209	175 526

Note: Sole proprietorships are included in the household sector.

www.statbank.dk/nat03

Table 355	Household sector		
	2009*	2010*	2011*
	DKK mio. in current prices		
Output	326 375	332 842	354 431
÷ Intermediate consumption	141 990	144 028	157 701
Gross value added, GVA	184 386	188 815	196 730
÷ Consumption of fixed capital	76 096	75 649	74 434
Net value added	108 290	113 165	122 296
Gross value added, GVA	184 386	188 815	196 730
÷ Other taxes less subsidies on production	-261	1 255	974
Gross domestic product at factor cost	184 647	187 560	195 756
÷ Compensation of employees (paid by resident producers)	52 699	52 945	53 920
Gross operating surplus and mixed income	131 948	134 615	141 836
+ Compensation of employees (received by resident employees)	960 861	964 666	976 973
+ Taxes on production and imports	•	•	•
+ Subsidies	•	•	•
+ Property income, net	176	29 754	22 867
Gross primary income	1 092 986	1 129 035	1 141 676
+ Current taxes on income, wealth, etc.	•	•	•
+ Social contributions	•	•	•
+ Social benefits other than transfers in kind	343 156	366 933	386 517
+ Other current transfers	37 168	38 620	37 577
Gross total income	1 473 310	1 534 588	1 565 770
+ Current taxes on income, wealth, etc.	452 784	468 487	481 023
+ Social contributions	173 146	170 952	171 580
+ Social benefits other than transfers in kind	•	•	•
+ Other current transfers	38 984	40 733	39 759
Gross total expenditure	664 915	680 172	692 361
Gross disposable income	808 395	854 416	873 409
+ Social transfers in kind	353 815	365 304	366 081
Adjusted gross disposable income	1 162 210	1 219 720	1 239 490
Gross disposable income	808 395	854 416	873 409
+ Adjustment for the change in net equity in households in pension funds reserves	79 028	70 672	58 204
÷ Individual consumption expenditure	814 897	850 920	867 916
Gross saving	72 526	74 168	63 697
Adjusted gross disposable income	1 162 210	1 219 720	1 239 490
+ Adjustment for the change in net equity in households in pension funds reserves	79 028	70 672	58 204
÷ Actual individual consumption	1 168 712	1 216 224	1 233 998
Gross saving	72 526	74 168	63 697
+ Capital transfers, net	-725	4 259	2 413
Changes in net worth due to saving and capital transfer	71 802	78 427	66 110
÷ Gross fixed capital formation, etc.	89 319	87 449	86 297
÷ Changes in inventories	100	79	520
÷ Acquisitions of non-financial non-produced assets, net	-381	257	60
Net lending	-17 236	-9 358	-20 767

Note 1: Sole proprietorships are included in the household sector.

www.statbank.dk/nat03

Note 2: Households and non-profit institutions serving households (NPISH).

Table 356		Output					
		Current prices			Constant 2005 prices, chain figures ¹		
		2009*	2010*	2011*	2009*	2010*	2011*
		DKK mio.					
	Total	2 942 440	3 088 832	3 235 717	2 697 219	2 727 735	2 784 765
	Of which: General government	521 732	537 266	537 351	458 718	461 246	455 760
A	Agriculture, forestry, fishing	62 911	73 146	81 776	60 981	63 200	62 569
B	Mining and quarrying	47 427	63 140	75 763	42 728	40 310	37 266
C	Manufacturing	547 871	559 328	589 876	510 813	511 828	522 060
D-E	Utility services	84 638	98 266	102 156	69 441	76 608	74 409
D	Electricity, gas and steam	53 686	62 469	63 470	44 454	48 072	44 306
E	Water, sewerage and waste	30 952	35 797	38 686	25 149	28 696	30 358
F	Construction	189 788	176 767	187 567	166 846	153 668	157 523
G-I	Trade and transport etc.	628 338	694 624	733 239	605 232	632 821	670 769
G	Wholesale and retail trade	312 652	330 287	353 394	274 182	284 548	296 730
H	Transportation	265 614	313 515	325 704	287 017	304 922	329 760
I	Accommodation, food service	50 072	50 823	54 141	44 712	44 938	46 684
J	Information and communication	155 136	161 142	167 973	158 746	161 469	165 686
K	Financial and insurance	148 441	153 123	156 060	145 878	146 591	144 968
La	Real estate;rent.of non-res.b.	65 249	67 191	73 473	54 150	54 530	58 226
Lb	Dwellings	161 388	167 029	172 572	143 663	144 952	146 148
M-N	Other business services	244 598	252 034	269 291	214 430	217 716	229 285
M	Knowledge-based services	165 790	169 674	176 640	143 841	145 298	149 767
N	Travel agent, cleaning, etc.	78 807	82 360	92 651	70 481	72 332	79 511
O-Q	Public adm., education, health	524 853	538 816	539 084	460 693	461 702	456 285
O	Public adm., defence etc.	146 884	150 226	150 183	128 298	128 111	126 546
P	Education	126 126	132 227	132 497	110 404	112 956	111 727
Q	Human health; social work	251 843	256 363	256 404	222 017	220 649	218 025
R-S	Arts, entertainm. oth.service	81 802	84 225	86 888	70 671	70 688	70 778
R	Arts and entertainment etc.	39 605	40 596	42 391	34 045	34 084	34 672
SA	Other service activities	39 908	41 259	42 263	34 647	34 626	34 347
SB	Households as employers	2 289	2 370	2 234	1 974	1 971	1 756

¹ Chained values do not show additivity. The sum of the components will thus not be equal to the shown totals. The magnitude of the difference is not an indicator of the reliability of the results.

Table 357 Gross value added

	Current prices			Constant 2005 prices, chain figures ¹		
	2009*	2010*	2011*	2009*	2010*	2011*
	DKK mio.					
Gross value added, total	1 434 342	1 510 371	1 534 801	1 291 160	1 303 808	1 317 791
Of which: General government	351 135	362 369	360 510	302 165	304 536	301 702
A Agriculture, forestry, fishing	13 564	19 619	22 967	16 328	15 531	14 797
B Mining and quarrying	36 071	52 103	64 377	33 861	32 166	29 547
C Manufacturing	176 286	174 063	167 042	163 379	165 908	168 430
D-E Utility services	33 457	38 043	35 728	29 150	31 669	30 217
D Electricity, gas and steam	21 944	25 264	22 580	21 384	22 627	20 346
E Water, sewerage and waste	11 513	12 779	13 148	7 784	8 876	9 434
F Construction	76 854	70 684	73 852	64 657	58 963	60 727
G-I Trade and transport etc.	252 947	289 408	294 516	235 933	248 776	260 178
G Wholesale and retail trade	166 935	175 215	183 878	139 091	144 101	150 479
H Transportation	63 892	92 693	89 716	77 269	86 653	90 937
I Accommodation, food service	22 120	21 501	20 922	19 173	19 169	19 996
J Information and communication	66 495	68 611	69 115	76 633	78 371	80 721
K Financial and insurance	93 450	94 496	93 645	93 041	90 901	87 425
La Real estate; rent. of non-res.b.	36 865	37 794	41 066	29 138	29 097	31 290
Lb Dwellings	122 216	127 067	130 104	110 402	111 148	111 012
M-N Other business services	113 357	112 804	117 213	93 838	94 498	100 656
M Knowledge-based services	75 905	75 048	76 434	61 372	62 004	65 278
N Travel agent, cleaning, etc.	37 452	37 756	40 779	32 287	32 302	35 200
O-Q Public adm., education, health	360 622	372 144	370 478	308 216	310 846	307 929
O Public adm., defence etc.	92 707	95 119	94 464	77 642	77 985	77 271
P Education	93 551	97 531	97 334	80 613	82 081	81 325
Q Human health; social work	174 365	179 494	178 680	150 045	150 876	149 427
R-S Arts, entertainm. oth.service	52 157	53 535	54 697	43 477	43 384	43 459
R Arts and entertainment etc.	23 423	23 790	24 452	19 213	19 198	19 510
SA Other service activities	26 445	27 375	28 012	22 282	22 206	22 177
SB Households as employers	2 289	2 370	2 234	1 974	1 971	1 756

¹ Chained values do not show additivity. The sum of the components will thus not be equal to the shown totals. The magnitude of the difference is not an indicator of the reliability of the results.

Table 359 Hours worked - correction

	Actual hours worked for employees			Total actual hours worked		
	2009*	2010*	2011*	2009*	2010*	2011*
	thousand hours					
Gross value added, total	4 063 661	3 967 532	3 957 340	4 387 151	4 290 681	4 283 644
Of which: General government	1 273 396	1 291 597	1 274 839	1 273 396	1 291 597	1 274 839
A Agriculture, forestry, fishing	65 312	62 368	62 236	130 178	127 292	128 794
B Mining and quarrying	5 632	5 529	5 769	5 700	5 598	5 837
C Manufacturing	509 246	474 395	470 279	522 942	488 547	484 264
D-E Utility services	41 745	42 426	42 906	41 790	42 471	42 950
D Electricity, gas and steam	21 785	21 517	21 777	21 785	21 517	21 777
E Water, sewerage and waste	19 960	20 909	21 130	20 005	20 954	21 173
F Construction	246 564	228 513	229 769	286 706	270 083	273 018
G-I Trade and transport etc.	972 171	941 717	947 815	1 076 036	1 042 805	1 048 843
G Wholesale and retail trade	593 526	576 443	575 565	661 137	643 241	642 084
H Transportation	255 556	246 045	250 481	273 980	262 690	267 354
I Accommodation, food service	123 090	119 230	121 769	140 919	136 874	139 405
J Information and communication	160 003	158 274	156 795	170 832	169 178	167 768
K Financial and insurance	137 446	129 964	129 479	137 446	129 964	129 479
La Real estate; rent. of non-res. b.	44 562	44 905	47 050	55 552	55 995	58 236
Lb Dwellings	22 677	22 105	22 697	23 279	22 712	23 314
M-N Other business services	375 570	357 454	362 731	416 668	399 222	404 640
M Knowledge-based services	210 935	203 958	204 761	240 429	233 996	234 890
N Travel agent, cleaning, etc.	164 634	153 496	157 970	176 238	165 227	169 750
O-Q Public adm., education, health	1 293 416	1 312 549	1 294 633	1 314 384	1 333 249	1 315 266
O Public adm., defence etc.	263 154	261 939	256 316	263 157	261 942	256 319
P Education	324 001	334 061	332 359	327 440	337 461	335 734
Q Human health; social work	706 261	716 549	705 959	723 788	733 846	723 213
R-S Arts, entertainm. oth. service	189 315	187 332	185 180	205 639	203 564	201 237
R Arts and entertainment etc.	64 426	62 730	63 254	68 082	66 375	66 813
SA Other service activities	99 432	98 908	98 240	112 100	111 495	110 738
SB Households as employers	25 457	25 695	23 686	25 457	25 695	23 686

www.statbank.dk/nat18n

Table 359 Hours worked

	Total actual hours worked			Actual hours worked for employees		
	2009*	2010*	2011*	2009*	2010*	2011*
	thousand hours					
Gross value added, total	4 063 661	3 967 532	3 957 340	4 387 151	4 290 681	4 283 644
Of which: General government	1 273 396	1 291 597	1 274 839	1 273 396	1 291 597	1 274 839
A Agriculture, forestry, fishing	65 312	62 368	62 236	130 178	127 292	128 794
B Mining and quarrying	5 632	5 529	5 769	5 700	5 598	5 837
C Manufacturing	509 246	474 395	470 279	522 942	488 547	484 264
D-E Utility services	41 745	42 426	42 906	41 790	42 471	42 950
D Electricity, gas and steam	21 785	21 517	21 777	21 785	21 517	21 777
E Water, sewerage and waste	19 960	20 909	21 130	20 005	20 954	21 173
F Construction	246 564	228 513	229 769	286 706	270 083	273 018
G-I Trade and transport etc.	972 171	941 717	947 815	1 076 036	1 042 805	1 048 843
G Wholesale and retail trade	593 526	576 443	575 565	661 137	643 241	642 084
H Transportation	255 556	246 045	250 481	273 980	262 690	267 354
I Accommodation, food service	123 090	119 230	121 769	140 919	136 874	139 405
J Information and communication	160 003	158 274	156 795	170 832	169 178	167 768
K Financial and insurance	137 446	129 964	129 479	137 446	129 964	129 479
La Real estate; rent of non-res. b.	44 562	44 905	47 050	55 552	55 995	58 236
Lb Dwellings	22 677	22 105	22 697	23 279	22 712	23 314
M-N Other business services	375 570	357 454	362 731	416 668	399 222	404 640
M Knowledge-based services	210 935	203 958	204 761	240 429	233 996	234 890
N Travel agent, cleaning, etc.	164 634	153 496	157 970	176 238	165 227	169 750
O-Q Public adm., education, health	1 293 416	1 312 549	1 294 633	1 314 384	1 333 249	1 315 266
O Public adm., defence etc.	263 154	261 939	256 316	263 157	261 942	256 319
P Education	324 001	334 061	332 359	327 440	337 461	335 734
Q Human health; social work	706 261	716 549	705 959	723 788	733 846	723 213
R-S Arts, entertainm. oth. service	189 315	187 332	185 180	205 639	203 564	201 237
R Arts and entertainment etc.	64 426	62 730	63 254	68 082	66 375	66 813
SA Other service activities	99 432	98 908	98 240	112 100	111 495	110 738
SB Households as employers	25 457	25 695	23 686	25 457	25 695	23 686

www.statbank.dk/nat18n

Table 360 Total employed and wage and salary earners

	Total employed ¹			Of which, wage and salary earners ²		
	2009*	2010*	2011*	2009*	2010*	2011*
	number of persons					
Total	2 682 403	2 620 513	2 609 680	2 855 651	2 792 760	2 780 409
Of which: General government	850 091	860 361	848 105	850 091	860 361	848 105
A Agriculture, forestry, fishing	39 926	38 140	38 195	74 494	72 556	72 067
B Mining and quarrying	3 386	3 263	3 385	3 427	3 303	3 423
C Manufacturing	331 778	307 262	303 954	339 623	315 021	311 665
D-E Utility services	25 764	26 194	26 376	25 788	26 219	26 398
D Electricity, gas and steam	13 226	13 072	13 187	13 226	13 073	13 187
E Water, sewerage and waste	12 538	13 122	13 189	12 562	13 146	13 211
F Construction	150 537	139 436	139 909	173 818	162 619	162 956
G-I Trade and transport etc.	674 720	657 238	659 323	721 682	703 867	705 571
G Wholesale and retail trade	434 684	424 644	423 080	463 021	452 743	450 967
H Transportation	149 509	144 516	146 054	159 481	154 437	155 896
I Accommodation, food service	90 527	88 078	90 189	99 180	96 687	98 708
J Information and communication	99 735	96 783	97 141	105 332	102 348	102 670
K Financial and insurance	92 775	86 858	86 846	92 775	86 858	86 846
La Real estate;rent.of non-res.b.	25 099	25 217	26 577	30 475	30 568	31 898
Lb Dwellings	11 347	11 504	11 674	11 756	11 910	12 077
M-N Other business services	246 309	237 403	239 817	272 743	263 670	265 878
M Knowledge-based services	134 118	129 469	130 653	152 611	147 868	148 939
N Travel agent, cleaning, etc.	112 191	107 934	109 164	120 132	115 802	116 939
O-Q Public adm., education, health	857 155	868 152	854 955	869 820	880 773	867 510
O Public adm., defence etc.	158 524	158 075	154 140	158 525	158 077	154 141
P Education	217 540	223 079	221 569	219 455	224 985	223 462
Q Human health; social work	481 091	486 998	479 247	491 840	497 711	489 908
R-S Arts, entertainm. oth.service	123 872	123 063	121 529	133 918	133 048	131 451
R Arts and entertainment etc.	43 252	42 831	42 510	45 207	44 766	44 422
SA Other service activities	63 611	62 955	62 960	71 702	71 005	70 969
SB Households as employers	17 009	17 277	16 059	17 009	17 277	16 059

¹ Includes employees temporarily on leave. ² Includes wage and salary earners temporarily on leave.

www.statbank.dk/nat18n

Table 361 Private consumption expenditure

	Current prices			2005 prices, chain figures ¹		
	2009*	2010*	2011*	2009*	2010*	2011*
	DKK mio.					
Total private consumption expenditure	814 897	850 920	867 916	758 882	773 166	769 234
Household consumption on Danish territory	799 004	834 444	851 102	743 026	758 400	754 881
Food	80 933	82 416	84 329	70 771	71 916	71 326
Beverages and tobacco	37 958	40 261	42 903	34 340	34 241	34 525
Clothing and footwear	36 238	36 910	36 628	35 729	36 639	35 821
Housing	186 517	192 819	199 384	164 843	166 066	167 355
Electricity, gas and other fuels	47 510	55 864	51 355	42 037	46 565	39 836
Furnishing, household equipment etc.	44 768	45 203	44 501	41 416	41 714	40 623
Medical products and health services	23 714	23 860	23 455	22 834	22 853	22 667
Purchase of vehicles	27 417	36 556	40 109	28 175	37 840	41 910
Other transport and communication	76 126	78 973	83 179	70 702	70 330	70 639
Recreation and culture	90 459	92 458	92 855	88 551	89 232	89 008
Other goods and services	147 365	149 123	152 404	141 879	139 825	140 951
Balance of tourism, net	2 339	2 420	2 463
Income from tourism	-35 285	-38 361	-36 833	-32 549	-34 796	-32 707
Expenditure on tourism	37 624	40 780	39 296	36 853	38 079	35 619
Membership organizations etc.	13 555	14 056	14 352	11 589	11 581	11 478
Goods	368 636	391 207	395 170	348 017	361 924	354 958
Durable	78 881	86 051	89 224	83 065	91 218	94 981
Semi-durable	82 856	84 024	83 618	79 960	81 255	79 935
Non-durable	206 898	221 132	222 327	183 653	188 666	180 377
Services	430 368	443 237	455 932	395 092	396 745	400 019
Housing	186 517	192 819	199 384	164 843	166 066	167 355
Other services	243 851	250 418	256 548	229 891	230 285	232 271

¹ Chained values do not show additivity. The sum of the components will thus not be equal to the shown totals. The magnitude of the difference is not an indicator of the reliability of the results.

www.statbank.dk/nat05

Table 362 Capital formation

	Current prices			2005 prices, chain figures ¹		
	2009*	2010*	2011*	2009*	2010*	2011*
	DKK mio.					
Machines and equipment	72 019	74 453	80 964	73 327	75 611	82 758
Transport	41 222	39 790	31 288	42 537	42 795	33 767
Buildings; facilities and installations	158 641	143 827	151 085	136 693	122 873	124 892
Housing	79 956	74 456	83 330	68 928	63 856	69 443
Other buildings	49 676	40 412	39 811	43 529	35 433	33 778
Civil engineering works	29 009	28 959	27 944	23 797	23 046	21 244
Livestock	122	-196	-56	-288	417	46
Valuables, net	2 541	2 711	2 663	1 945	2 022	1 958
Purchased and own-account computer software	34 576	41 780	41 422	31 625	35 176	35 535
Entertainment, literary and artistic originals	1 895	1 883	1 766	1 733	1 679	1 538
Mineral exploration	2 511	865	672	2 470	815	567
Total gross fixed capital formation	313 527	305 112	309 803	289 294	278 588	279 593
Of which: General government acquisition of new fixed assets	34 189	37 341	39 624	31 298	33 967	35 265
+ Change in stocks, net	-20 142	-3 956	2 771	-14 061	-2 628	2 165
Total gross capital formation	293 386	301 157	312 574	268 271	272 637	280 166
- Consumption of fixed capital	297 232	290 300	216 562	268 680	262 765	261 594
Total net capital formation	-3 847	10 857	96 012	1 754	-3 406	-6 420

¹ Chained values do not show additivity. The sum of the components will thus not be equal to the shown totals. The magnitude of the difference is not an indicator of the reliability of the results.

www.statbank.dk/nat04

Table 363 Gross fixed capital formation

	Current prices			Constant 2005 prices, chain figures ¹		
	2006	2007	2008	2006	2007	2008
	DKK mio.					
Total gross fixed capital formation	353 363	368 698	368 757	344 770	346 166	331 793
Machinery, equipment and transport equipment	131 428	140 881	141 176	133 073	139 392	135 817
Building and construction	188 775	194 298	188 927	178 613	174 384	160 198
Other gross fixed capital formation.	33 159	33 519	38 654	33 084	32 744	36 760
Of which: General government	31 748	31 846	32 994	30 930	29 726	26 637
Machinery, equipment and transport equipment	7 657	7 782	7 984	7 956	7 938	8 141
Building and construction	21 692	21 305	21 734	20 579	19 132	18 475
Other gross fixed capital formation.	2 399	2 760	3 276	2 396	2 702	3 129
A Agriculture, forestry, fishing	14 566	17 754	16 540	14 209	16 729	14 969
Machinery, equipment and transport equipment	8 618	10 029	9 636	8 549	9 702	9 008
Building and construction	5 530	7 243	6 352	5 242	6 537	5 447
Other gross fixed capital formation.	418	481	552	417	473	529
B Mining and quarrying	5 832	7 751	8 263	5 743	7 268	7 290
Machinery, equipment and transport equipment	1 711	2 284	2 624	1 758	2 278	2 562
Building and construction	3 405	4 666	4 103	3 264	4 218	3 398
Other gross fixed capital formation.	716	800	1 536	720	768	1 388
C Manufacturing	30 568	33 734	37 183	30 116	32 165	33 942
Machinery, equipment and transport equipment	19 747	19 333	20 314	19 566	18 648	18 709
Building and construction	6 641	9 865	11 657	6 377	9 007	10 151
Other gross fixed capital formation.	4 180	4 536	5 213	4 173	4 440	4 976
D-E Utility services	15 302	14 993	15 338	14 842	13 901	12 435
Machinery, equipment and transport equipment	5 362	5 949	5 087	5 294	5 710	4 560
Building and construction	9 379	8 373	9 651	8 987	7 562	7 295
Other gross fixed capital formation.	561	671	600	560	656	572
F Construction	9 079	8 190	7 032	8 976	7 893	6 681
Machinery, equipment and transport equipment	6 794	5 904	5 593	6 764	5 764	5 419
Building and construction	1 825	1 697	757	1 754	1 553	656
Other gross fixed capital formation.	459	589	682	458	577	651
G-I Trade and transport etc.	61 753	66 477	80 513	61 557	64 105	74 208
Machinery, equipment and transport equipment	43 358	49 731	50 670	43 671	48 623	47 555
Building and construction	12 851	12 109	24 804	12 352	11 044	21 342
Other gross fixed capital formation.	5 544	4 637	5 039	5 534	4 537	4 809
J Information and communication	20 769	18 860	21 767	20 852	18 378	19 632
Machinery, equipment and transport equipment	5 305	4 831	4 232	5 691	5 124	4 446
Building and construction	6 962	5 848	8 536	6 667	5 283	6 483
Other gross fixed capital formation.	8 503	8 180	8 999	8 494	8 003	8 589
K Financial and insurance	7 095	7 713	8 125	7 225	7 701	7 999
Machinery, equipment and transport equipment	2 192	2 460	2 439	2 334	2 594	2 598
Building and construction	170	219	114	162	199	98
Other gross fixed capital formation.	4 734	5 035	5 573	4 728	4 914	5 309
LA Real estate;rent.of non-res.b.	13 258	17 927	8 545	12 849	16 546	7 620
Machinery, equipment and transport equipment	1 781	3 149	3 131	1 842	3 191	3 133
Building and construction	10 825	14 146	4 860	10 356	12 787	4 179
Other gross fixed capital formation.	653	631	554	651	620	532
LB Dwellings	110 963	110 035	96 936	104 534	98 495	83 740
Machinery, equipment and transport equipment	2 558	2 553	2 863	2 695	2 628	2 886
Building and construction	107 894	106 879	93 246	101 329	95 289	80 188
Other gross fixed capital formation.	511	604	827	510	595	795
M-N Other business services	19 464	20 871	21 110	19 567	20 619	20 583
Machinery, equipment and transport equipment	15 879	15 750	15 226	16 034	15 740	15 142
Building and construction	1 147	2 553	2 519	1 097	2 307	2 168
Other gross fixed capital formation.	2 438	2 568	3 365	2 436	2 509	3 208
O-Q Public adm., education, health	30 863	29 853	32 590	30 211	28 162	29 704
Machinery, equipment and transport equipment	9 694	9 553	10 460	10 032	9 732	10 651
Building and construction	19 154	17 855	18 941	18 167	16 094	16 153
Other gross fixed capital formation.	2 015	2 445	3 189	2 013	2 394	3 047
R-S Arts, entertainm. oth.service	13 851	14 541	14 815	14 091	14 463	14 464
Machinery, equipment and transport equipment	8 430	9 355	8 901	8 843	9 673	9 195
Building and construction	2 993	2 845	3 389	2 858	2 578	2 914
Other gross fixed capital formation.	2 428	2 341	2 525	2 390	2 260	2 349

¹ Chained values do not show additivity. The sum of the components will thus not be equal to the shown totals. The magnitude of the difference is not an indicator of the reliability of the results.

www.statbank.dk/nat06n

Table 364 (page 1 of 2) Supply of goods. 2008 – Correction

SITC	Danish turnover	Imports incl. customs duties	Exports	Domestic supply	Used for			
					Inter-mediate consumption	Household consumption	Government consumption ¹	Capital formation, stocks
DKK mio.								
0 Food and live animals	166 533	54 642	82 053	139 123	98 108	40 386	69	560
00 Live animals other than animals of division 03	23 178	209	2 711	20 677	20 786	169	-	- 278
01 Meat and meat preparations	37 973	7 729	28 410	17 292	6 329	10 759	-	204
02 Dairy products and birds' eggs	36 582	4 481	12 683	28 381	21 284	6 809	-	288
03 Fish (not marine mammals), crustaceans, molluscs, and aquatic invertebrates preparations and preparations thereof	12 219	10 318	13 656	8 881	8 198	690	-	- 8
04 Cereals and cereals preparations	14 727	6 665	5 075	16 318	12 413	5 272	-	-1 367
05 Vegetables and fruit	7 602	9 670	2 520	14 752	6 704	7 868	-	180
06 Sugars, sugar preparations and honey	4 276	2 019	2 394	3 901	2 429	1 426	-	46
07 Coffee, tea, cocoa, spices and manufactures thereof	2 600	3 188	1 131	4 657	1 522	3 093	-	42
08 Feeding stuff for animals (not including unmilled cereals)	16 540	7 343	4 341	19 542	16 772	1 302	-	1 468
09 Miscellaneous edible products and preparations	10 837	3 020	9 133	4 724	1 672	2 998	69	- 16
1 Beverages and tobacco	12 574	6 709	5 664	13 619	4 154	9 255	-	210
11 Beverages	9 196	5 877	4 079	10 994	3 662	7 221	-	111
12 Tobacco and tobacco manufactures	3 378	832	1 584	2 625	491	2 034	-	99
2 Crude materials, inedible, except fuels	20 883	15 430	17 674	18 639	20 167	3 305	-	-4 832
21 Hides, skins and furskins, raw	2 977	1 015	4 965	- 973	402	-	-	-1 375
22 Oil seeds and oleaginous fruit	1 970	1 920	466	3 424	3 318	12	-	94
23 Crude rubber (including synthetic and reclaimed)	91	296	120	267	266	-	-	0
24 Cork and wood	2 444	4 614	773	6 286	5 059	1 119	-	108
25 Pulp and waste paper	41	404	83	362	366	-	-	- 4
26 Textile fibres (other than wool tops and other combed wool) and their wastes (not manufactured into yarn or fabric)	766	300	604	461	423	18	-	21
27 Crude fertilizers other than those of division 56, and crude minerals (excluding coal, petroleum and precious stones)	2 717	1 273	792	3 198	3 122	140	-	- 64
28 Metalliferous ores and metal scrap	830	1 362	3 184	- 992	2 815	-	-	-3 807
29 Crude animals and vegetable materials, n.e.s.	9 047	4 246	6 686	6 607	4 395	2 016	-	195
3 Mineral fuels, lubricants and related materials	155 475	88 448	73 813	170 109	140 054	23 277	-	6 778
32 Coal, coke and briquettes	355	5 026	39	5 342	4 903	84	-	356
33 Petroleum, petroleum products and related materials	88 491	79 114	56 429	111 176	94 544	10 182	-	6 450
34 Gas, natural and manufactured	42 515	95	12 712	29 898	26 926	3 000	-	- 28
35 Electric current	24 114	4 212	4 634	23 692	13 681	10 011	-	-
4 Animal and vegetable oils, fats and waxes	4 452	4 188	3 353	5 287	4 938	210	-	139
41 Animal oils and fats	1 524	1 042	1 477	1 090	1 033	29	-	27
42 Fixed vegetable fats and oils, crude, refined or fractionated	2 366	2 089	1 346	3 110	2 851	161	-	98
43 Animal or vegetable fats and oils, processed; waxes of animal or vegetable origin, inedible mixtures or preparations of animal or vegetable fats and oils, n.e.s.	561	1 057	530	1 087	1 054	20	-	13
5 Chemicals and related products, n.e.c	78 468	59 723	69 230	68 961	58 057	5 898	4 153	853
51 Organic chemicals	9 311	5 260	7 533	7 038	6 851	40	-	148
52 Inorganic chemicals	1 212	3 376	735	3 853	3 829	31	-	- 7
53 Dyeing, tanning and colouring materials	3 993	3 393	3 536	3 850	3 442	308	-	99
54 Medical and pharmaceutical products	40 633	17 081	38 132	19 582	12 177	2 932	4 153	320
55 Essential oils and resinoids and perfume materials; toilet, polishing and cleaning preparations	2 663	5 366	3 408	4 621	2 141	2 179	-	302

¹ Goods for producing services in the general government sector are included in "Intermediate consumption". Goods for public consumption mainly cover subsidy schemes, e.g. for medical products.

Table 364 (page 2 of 2) Supply of goods. 2008 – Correction

SITC	Danish turnover	Imports incl. customs duties	Exports	Domestic supply	Used for			
					Inter-mediate consumption	Household consumption	Government consumption ¹	Capital formation, stocks
DKK mio.								
56	198	2 715	261	2 652	2 595	51	-	6
57	1 198	9 735	1 639	9 295	9 218	4	-	73
58	7 812	6 559	4 494	9 877	9 682	160	-	36
59	11 448	6 238	9 493	8 193	8 122	193	-	-122
6	101 018	92 692	57 824	135 885	126 471	5 932	466	3 015
61	77	745	291	530	379	123	-	28
62	980	4 075	1 157	3 898	3 616	191	-	91
63	12 111	6 236	3 938	14 409	13 716	567	-	125
64	8 355	11 888	4 925	15 318	14 186	786	466	-121
65	5 747	8 257	6 398	7 606	5 582	1 461	-	563
66	23 001	8 088	10 458	20 631	18 993	1 274	-	363
67	6 497	24 072	9 655	20 914	20 804	5	-	105
68	3 244	7 979	3 131	8 091	8 017	13	-	62
69	41 006	21 352	17 870	44 488	41 178	1 511	-	1 798
7	156 782	189 312	134 786	211 308	96 302	27 655	356	86 994
71	42 558	12 115	25 369	29 304	19 542	61	-	9 701
72	19 809	18 171	17 531	20 449	5 276	337	-	14 835
73	1 457	2 197	1 286	2 369	530	-	-	1 839
74	42 722	30 357	35 264	37 815	23 454	163	-	14 198
75	2 603	20 622	6 588	16 637	4 001	2 958	7	9 671
76	7 024	16 645	8 718	14 950	8 127	4 245	-	2 578
77	20 674	25 787	15 692	30 769	22 149	3 720	3	4 897
78	9 210	41 184	13 800	36 595	5 652	15 873	347	14 724
79	10 724	22 234	10 538	22 421	7 571	300	-	14 550
8	87 603	83 480	75 799	95 284	48 611	29 396	1 140	16 136
81	4 673	3 618	2 721	5 570	3 309	584	4	1 673
82	18 662	8 921	12 960	14 623	2 604	5 530	148	6 341
83	6	1 349	506	850	167	611	-	72
84	2 984	25 007	17 595	10 396	1 589	7 925	-	882
85	422	5 526	3 042	2 907	231	2 317	8	352
87	14 920	10 152	14 363	10 708	6 904	189	14	3 601
88	1 046	2 694	1 204	2 536	1 371	976	36	153
89	44 891	26 211	23 408	47 693	32 436	11 263	930	3 064
9	24	986	67	944	983	-58	-	19
93	-	858	42	815	815	-	-	-
96	24	1	2	24	0	1	-	23
97	-	128	23	105	167	-59	-	-4

Table 365 Gross domestic product by regions and provinces. 2010

	Gross domestic product	Gross domestic product per capita ¹	Gross domestic product per capita ¹	Annual average real growth 2004-2010	Average real growth 2010
	current prices DKK mio.	current prices DKK 1 000	the whole country = 100	per cent	
Denmark²	1 754 648	316	100	0.3	1.3
Region Hovedstaden	633 183	375	118	1.1	3.0
Province København By	294 099	429	136	1.4	1.2
Province København Omegn	212 330	413	131	0.7	3.7
Province Nordsjælland	117 576	263	83	1.0	6.2
Province Bornholm	9 177	218	69	-0.5	0.3
Region Sjælland	181 254	221	70	-1.0	1.2
Province Østsjælland	54 655	233	74	-0.2	4.3
Province Vest- og Sydsjælland	126 599	216	68	-1.3	-0.1
Region Syddanmark	341 694	285	90	0.3	0.8
Province Fyn	123 556	255	81	0.1	1.5
Province Syddjylland	218 137	305	97	0.4	0.3
Region Midtjylland	370 506	295	93	0.8	0.6
Province Vestjylland	242 216	292	92	1.5	1.9
Province Østjylland	128 290	300	95	-0.3	-1.9
Region Nordjylland	167 849	290	92	1.1	-0.3
Province Nordjylland	167 849	290	92	1.1	-0.3
Outside the regions ³	60 163	0	0	-7.8	-4.9

¹ It is not possible to calculate GDP per capita outside the regions. ² Figures for the whole country correspond to earlier figures – National accounts, November version 2004-2010. ³ Activities that cannot be allocated to any county. Primary activities in the North Sea.

www.statbank.dk/rnat111 and rnat21

Table 366 Input-output table. 2008

	Input in main groups of industries								Total
	Agriculture, fishing, quarrying	Manufacturing	Electricity, gas and water supply	Construction	Wholesale and retail trade; hotels, restaurants	Transport, post and telecommunications	Finance and business activities	Public and personal services	
	DKK mio. in current prices								
Agriculture, fishing, quarrying.	9 558	63 300	17 900	715	461	15	422	296	92 668
Manufacturing	16 041	105 656	2 258	42 312	26 155	7 759	8 045	9 835	218 061
Electricity, gas and water supply	1 610	12 542	6 791	365	7 006	1 633	3 793	9 435	43 174
Construction	1 684	2 669	4 682	2 017	3 974	3 402	32 262	5 937	56 628
Wholesale and retail trade; hotels, restaurants	5 940	46 314	3 449	25 765	82 250	9 071	18 519	25 790	217 098
Transport, post and telecommunications	316	5 857	1 289	694	14 817	23 592	32 472	16 581	95 618
Finance and business activities	10 607	36 454	7 001	27 764	75 082	20 203	103 363	39 092	319 567
Public and personal services	305	2 973	587	410	4 638	3 589	8 453	20 753	41 707
Total use of domestic products	46 061	275 764	43 957	100 043	214 383	69 264	207 329	127 719	1 084 520
Imports incl. customs duties	15 639	184 016	9 231	28 416	230 292	18 641	39 184	28 575	553 995
Taxes on products, net and VAT	3 711	4 199	1 551	1 774	11 759	46	19 691	26 848	69 579
Uses at market prices	65 412	463 979	54 739	130 233	456 434	87 950	266 204	183 142	1 708 093
Other taxes linked to production, net.	-6 914	-969	111	-40	-1 380	-571	14 417	-3 042	1 612
Compensation of employees	9 600	141 853	10 920	66 545	213 148	49 487	153 697	334 037	979 286
Gross operating surplus and mixed income	74 160	51 565	26 439	23 135	83 903	15 585	188 014	55 036	517 837
Gross output at basic prices	142 257	656 427	92 209	219 873	752 105	152 452	622 332	569 173	3 206 829
	Final demand								Total
	Private consumption	Government consumption	Gross fixed capital formation			Increase in stocks	Exports	Total	
			Machinery and transport equipment	Building and construction	Other capital formation				
	DKK mio. in current prices								
Agriculture, fishing, quarrying.	3 435	30	9	0	709	-1 978	47 385	49 590	142 257
Manufacturing	45 646	982	31 390	0	2 036	12 488	345 824	438 367	656 427
Electricity, gas and water supply	33 248	0	0	0	275	24	15 490	49 036	92 209
Construction	4 167	6 264	196	151 153	160	0	1 305	163 245	219 873
Wholesale and retail trade; hotels, restaurants	186 503	3 531	20 510	0	7 048	814	316 601	535 007	752 105
Transport, post and telecommunications	25 549	0	270	0	14 676	108	16 231	56 834	152 452
Finance and business activities	235 179	4 737	4 887	11 896	5 039	135	40 892	302 765	622 332
Public and personal services	77 374	442 245	14	178	4 188	0	3 466	527 466	569 173
Total use of domestic products	611 100	457 790	57 276	163 227	34 131	11 591	787 193	2 122 309	3 206 829
Imports incl. custom duties	90 820	5 340	68 203	648	11 713	8 862	172 973	358 559	912 553
Tourism revenues etc.	-36 437	0	0	0	0	0	36 437	0	0
Taxes on products, net. and VAT	138 096	2 274	15 686	25 376	896	-15	-582	181 731	251 310
Use at market prices	803 579	465 404	141 165	189 251	46 740	20 437	996 022	2 662 599	4 370 692

www.statbank.dk/natio1

Table 367 Fixed capital

	Current prices			2005-prices, chain figures ¹		
	2008	2009*	2010*	2008	2009*	2010*
	DKK mio.					
Total gross capital stock, opening stock	9 600 654	9 901 373	9 993 466	8 556 000	8 673 923	8 799 210
Other machinery and equipment	1 104 140	1 160 534	1 195 378	1 079 838	1 100 841	1 141 574
Transport equipment	438 243	458 611	471 253	433 456	452 042	465 866
Buildings and structures	7 877 745	8 085 572	8 125 492	6 872 039	6 943 099	7 011 694
Dwellings	4 180 575	4 311 899	4 370 426	3 672 717	3 714 058	3 760 836
Non-residential buildings	2 422 767	2 490 114	2 470 696	2 115 767	2 140 346	2 158 153
Other structures	1 274 403	1 283 559	1 284 369	1 084 017	1 089 339	1 093 461
Livestock	7 753	7 931	7 934	7 725	7 718	7 624
Computer software	138 468	153 877	157 125	134 393	143 535	147 703
Entertainment, literary or artistic originals	11 510	12 202	12 490	10 790	11 070	11 121
Mineral exploration	22 795	22 645	23 795	21 063	21 879	23 559
Total consumption of fixed capital	298 683	297 232	290 300	267 336	268 680	262 765
Other machinery and equipment	80 498	79 358	73 557	78 261	77 420	73 735
Transport equipment	33 511	35 025	35 566	33 684	34 932	35 333
Buildings and structures	150 568	149 723	152 021	123 974	125 376	126 239
Dwellings	65 155	68 410	69 222	55 454	57 058	57 371
Non-residential buildings	52 342	49 249	49 396	41 226	41 007	41 336
Other structures	33 071	32 063	33 403	27 275	27 354	27 576
Livestock	0	0	0	0	0	0
Computer software	31 416	30 503	26 540	29 267	28 740	24 870
Entertainment, literary or artistic originals	1 907	1 850	1 715	1 766	1 694	1 530
Mineral exploration	782	774	901	704	761	850
Total net capital stock, opening stock	5 252 737	5 439 765	5 405 642	4 673 421	4 733 812	4 741 302
Other machinery and equipment	594 275	637 507	614 401	587 639	601 168	591 734
Transport equipment	259 891	272 079	278 868	257 688	268 849	277 459
Buildings and structures	4 296 132	4 416 810	4 396 356	3 729 825	3 761 896	3 767 306
Dwellings	2 270 780	2 352 412	2 371 958	1 989 947	2 012 935	2 023 039
Non-residential buildings	1 307 188	1 348 523	1 316 179	1 127 302	1 142 864	1 142 645
Other structures	718 164	715 875	708 219	613 124	606 860	602 454
Livestock	7 753	7 931	7 934	7 725	7 718	7 624
Computer software	76 250	86 502	87 801	75 908	81 045	83 006
Entertainment, literary or artistic originals	6 283	6 668	6 839	5 890	6 049	6 090
Mineral exploration	12 152	12 268	13 441	11 229	11 853	13 309

¹ Chained values do not show additivity. The sum of the components will thus not be equal to the shown totals. The magnitude of the difference is not an indicator of the reliability of the results.

www.statbank.dk/nat08 and [nat04](http://www.statbank.dk/nat04)

Table 368 Financial accounts. Denmark and rest of the world

	2008	2009*	2010*
	————— current prices, DKK mio. —————		
Financial account (transactions)			
Financial assets	40 707	76 373	14 954
Monetary gold and Special Drawing Rights (SDRs)	53	372	-8
Currency and deposits	28 553	-147 132	45 428
Securities other than shares	-103 860	153 602	-72 994
Loans	95 504	30 746	33 654
Shares and other equity	-1 845	43 555	4 812
Insurance technical reserves	-508	1 597	114
Other accounts receivable	22 810	-6 367	3 948
Financial liabilities	91 602	130 790	112 395
Monetary gold and Special Drawing Rights (SDRs)	•	•	•
Currency and deposits	100 184	-166 348	-84 372
Securities other than shares	-92 233	184 992	59 598
Loans	118 585	34 979	86 513
Shares and other equity	-47 417	87 073	46 742
Insurance technical reserves	-2 381	1 621	417
Other accounts receivable	14 864	-11 527	3 497
Net lending (+)/net borrowing (-)	-50 896	-54 417	-97 441
Other changes in assets account			
Financial assets	273 500	-161 363	375 101
Monetary gold and Special Drawing Rights (SDRs)	•	•	•
Currency and deposits	-2 659	4 129	40 915
Securities other than shares	500 014	-219 429	166 628
Loans	-2 331	8 451	-1 033
Shares and other equity*	-212 303	49 077	162 545
Insurance technical reserves	-644	794	970
Other accounts receivable	-8 577	-4 385	5 076
Financial liabilities	226 407	-64 777	380 147
Monetary gold and Special Drawing Rights (SDRs)	•	•	•
Currency and deposits	-35 353	8 269	14 486
Securities other than shares	561 754	-225 163	169 348
Loans	-29 888	-4 374	5 629
Shares and other equity*	-266 883	149 299	178 579
Insurance technical reserves	-52	-18	-14
Other accounts receivable	-3 171	7 210	12 119
Closing balance sheet			
Financial assets	4 373 264	4 287 902	4 677 965
Monetary gold and Special Drawing Rights (SDRs)	•	•	•
Currency and deposits	1 241 778	1 098 775	1 185 118
Securities other than shares	1 727 110	1 661 283	1 754 917
Loans	522 019	561 216	593 837
Shares and other equity*	751 001	843 633	1 010 990
Insurance technical reserves	13 148	15 540	16 623
Other accounts receivable	118 208	107 455	116 480
Financial liabilities	4 270 311	4 336 324	4 828 866
Monetary gold and Special Drawing Rights (SDRs)	•	•	•
Currency and deposits	865 965	707 886	638 000
Securities other than shares	1 466 257	1 426 086	1 655 032
Loans	672 768	703 373	795 515
Shares and other equity*	1 094 717	1 331 089	1 556 410
Insurance technical reserves	5 568	7 170	7 573
Other accounts receivable	165 036	160 720	176 336
Net financial assets	102 953	-48 422	-150 901

Note: Financial accounts figures for the rest of the world are drawn up from the point of view of the rest of the world. Thus, a financial asset held by the rest of the world is a liability for Denmark and vice versa.

www.statbank.dk/nat10, nat11, nat12 and nat13

Table 369 Financial accounts. General government

	2008	2009*	2010*
	————— current prices, DKK mio. —————		
Financial account (transactions)			
Financial assets	158 322	74 157	37 571
Monetary gold and Special Drawing Rights (SDRs)	•	•	•
Currency and deposits	146 703	-76 245	-15 863
Securities other than shares	-27 643	55 279	12 405
Loans	34 483	38 571	416
Shares and other equity	-2 039	1 658	2 572
Insurance technical reserves	-67	8	-6
Other accounts receivable	6 885	54 887	38 047
Financial liabilities	100 771	120 011	84 984
Monetary gold and Special Drawing Rights (SDRs)	•	•	•
Currency and deposits	885	324	274
Securities other than shares	91 562	74 697	75 665
Loans	11 582	7 971	5 899
Shares and other equity	•	•	•
Insurance technical reserves	•	•	•
Other accounts receivable	-3 258	37 020	3 146
Net lending (+)/net borrowing (-)	57 551	-45 855	-47 413
Other changes in assets account			
Financial assets	4 505	-947	25 025
Monetary gold and Special Drawing Rights (SDRs)	•	•	•
Currency and deposits	-	233	-
Securities other than shares	2 243	2 461	9 833
Loans	2 074	266	-334
Shares and other equity*	-18	-71	12 808
Insurance technical reserves	15	11	8
Other accounts receivable	190	-3 847	2 711
Financial liabilities	19 324	-13 792	23 195
Monetary gold and Special Drawing Rights (SDRs)	•	•	•
Currency and deposits	-	-	-
Securities other than shares	26 124	-14 570	22 774
Loans	-6 800	766	421
Shares and other equity*	•	•	•
Insurance technical reserves	•	•	•
Other accounts receivable	-	10	-
Closing balance sheet			
Financial assets	1 015 750	1 088 959	1 151 555
Monetary gold and Special Drawing Rights (SDRs)	•	•	•
Currency and deposits	299 769	223 757	207 894
Securities other than shares	129 458	187 198	209 436
Loans	189 031	227 868	227 950
Shares and other equity*	262 551	264 137	279 517
Insurance technical reserves	573	591	593
Other accounts receivable	134 368	185 408	226 166
Financial liabilities	908 187	1 014 406	1 122 585
Monetary gold and Special Drawing Rights (SDRs)	•	•	•
Currency and deposits	14 182	14 506	14 780
Securities other than shares	601 208	661 335	759 775
Loans	175 766	184 503	190 823
Shares and other equity*	•	•	•
Insurance technical reserves	•	•	•
Other accounts receivable	117 032	154 062	157 208
Net financial assets	107 563	74 553	28 970

Note: The figures are non-consolidated, i.e. outstanding accounts between the individual units in the sector are not eliminated.

www.statbank.dk/nat10, nat11, nat12 and nat13

Table 370 Financial accounts. Corporate sector

	2008	2009*	2010*
	————— current prices, DKK mio. —————		
Financial account (transactions)			
Financial assets	1 643 589	-262 430	1 289 331
Monetary gold and Special Drawing Rights (SDRs)	-53	-372	8
Currency and deposits	449 540	-378 752	-85 598
Securities other than shares	642 581	90 473	317 786
Loans	497 951	-43 329	198 519
Shares and other equity	21 483	124 159	796 370
Insurance technical reserves	-4 204	868	1 554
Other accounts receivable	36 291	-55 478	60 692
Financial liabilities	1 589 703	-379 937	1 135 118
Monetary gold and Special Drawing Rights (SDRs)	•	•	•
Currency and deposits	525 459	-415 667	59 569
Securities other than shares	513 728	25 289	103 888
Loans	367 884	-102 336	91 009
Shares and other equity	55 297	106 122	760 333
Insurance technical reserves	78 044	77 143	59 226
Other accounts receivable	49 290	-70 486	61 092
Net lending (+)/net borrowing (-)	53 887	117 507	154 213
Other changes in assets account			
Financial assets	-1 634 020	542 893	580 106
Monetary gold and Special Drawing Rights (SDRs)	750	13 484	5 506
Currency and deposits	-34 114	3 067	-27 413
Securities other than shares	91 238	20 681	34 836
Loans	15 499	31 550	5 160
Shares and other equity*	-1 685 103	496 749	584 527
Insurance technical reserves	488	342	274
Other accounts receivable	-22 777	-22 980	-22 785
Financial liabilities	-2 018 976	735 004	890 270
Monetary gold and Special Drawing Rights (SDRs)	•	•	•
Currency and deposits	-17 905	4 994	3 436
Securities other than shares	1 198	52 287	18 232
Loans	44 954	25 219	-8 525
Shares and other equity*	-2 021 289	590 984	710 958
Insurance technical reserves	-12 386	60 720	154 013
Other accounts receivable	-13 549	802	12 156
Closing balance sheet			
Financial assets	14 296 393	14 576 858	16 446 293
Monetary gold and Special Drawing Rights (SDRs)	11 477	24 590	30 104
Currency and deposits	2 463 836	2 088 151	1 975 140
Securities other than shares	3 874 716	3 985 870	4 338 492
Loans	4 558 932	4 547 153	4 750 831
Shares and other equity*	2 570 723	3 191 633	4 572 528
Insurance technical reserves	25 947	27 157	28 985
Other accounts receivable	790 763	712 305	750 212
Financial liabilities	15 705 120	16 060 188	18 085 577
Monetary gold and Special Drawing Rights (SDRs)	•	•	•
Currency and deposits	3 939 016	3 528 343	3 591 349
Securities other than shares	3 839 529	3 917 105	4 039 225
Loans	2 103 298	2 026 179	2 108 664
Shares and other equity*	3 342 512	4 039 618	5 510 909
Insurance technical reserves	1 815 688	1 953 550	2 166 789
Other accounts receivable	665 077	595 392	668 640
Net financial assets	-1 408 726	-1 483 330	-1 639 284

Note: The figures are non-consolidated, i.e. outstanding accounts between the individual units in the sector are not eliminated.

www.statbank.dk/nat10, nat11, nat12 and nat13